

 PURINA®
PRO PLAN®
VETERINARY
DIETS

Understanding your cat's

GASTRO- INTESTINAL CONDITION



It's not uncommon.

Cats, like humans, can suffer from gastrointestinal upsets leading to vomiting and diarrhoea. These upsets are often of short duration and self-limiting, however, sometimes they can become chronic and recurrent, and this can be a source of distress for both you and your cat. In this leaflet we will help you to understand the potential causes and signs of your cat's gastrointestinal upset, and give some useful tips on how you can help your cat to feel better, in particular the benefits of feeding a tailored gastrointestinal diet.

Gastrointestinal conditions are one of the most common reasons cats and kittens are taken to their veterinary clinic. Diet plays a crucial role in helping the condition resolve, and when combined with other treatments, most cats will be able to make a complete recovery.

What does the gastrointestinal tract do?

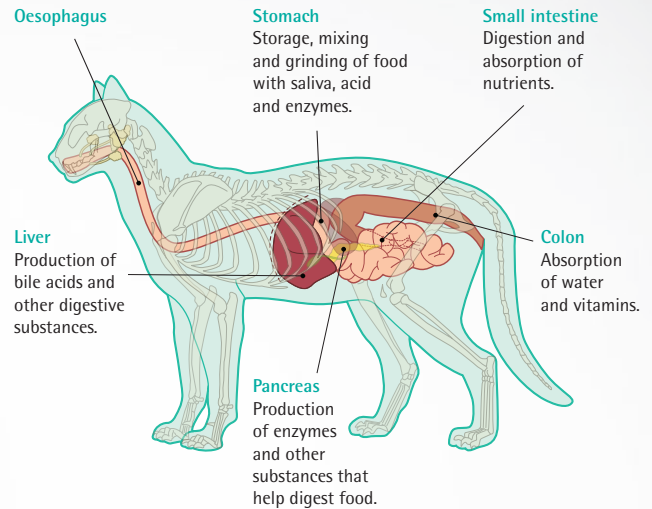
The gastrointestinal tract digests food and absorbs nutrients. After chewing and swallowing, food enters the stomach where it is mixed and ground into small parts and here digestion begins. The food then moves to the small intestine where most of the digestion and absorption of nutrients takes place. The liver and pancreas release powerful enzymes that break down the food into smaller particles that can be easily absorbed, and then used by the body for energy and to build and repair tissues. In the large intestine (colon), water and minerals are absorbed and undigested matter and waste is eliminated as faeces.

What causes gastrointestinal upsets in cats?

There are many causes of gastrointestinal upsets in cats, some common causes include:

- Allergies or food intolerances
- An abrupt change in diet
- Scavenging or eating spoiled food
- Parasites or infectious agents
- Eating and swallowing foreign objects
- Medications
- Liver, pancreas and systemic diseases

Key functions of the gastrointestinal tract:



What are the signs of gastrointestinal upsets?

The clinical signs of gastrointestinal upsets commonly include:

- Diarrhoea or constipation
- Loss of appetite
- Vomiting
- Flatulence
- Weight loss

How does your vet diagnose a gastrointestinal disorder?

Your vet may recommend the following procedures:

- Blood tests and other laboratory analyses
- X-ray or ultrasound examinations
- Endoscopy or possibly surgery to take biopsies

How can you help your cat?

Gastrointestinal conditions can irritate the stomach and intestine, and poorly digested food can contribute to the signs. A diet that's easily digested ensures your cat gets all the essential nutrients necessary to support their recovery, while at the same time may help reduce the signs. In fact, 1/3 to 1/2 of chronic diarrhoea cases may respond to dietary change alone.

Tips to help your cat to recover:

- Only feed a feline veterinary diet (like PURINA® PRO PLAN® VETERINARY DIETS EN S_T/Ox Gastrointestinal) and avoid table scraps and treats.
- Gradually introduce the new diet over a number of days.
- Have plenty of fresh clean water available at all times in metal or ceramic water bowls, instead of plastic that can taint the flavour of the water.

Food is important.

PURINA® PRO PLAN® VETERINARY DIETS Feline EN S_T/Ox Gastrointestinal contains high quality and highly digestible ingredients that help ease the work of the digestive tract, helping your cat's gastrointestinal system to recover and to cope better with the underlying condition. With gastrointestinal conditions your cat can be more sensitive to food ingredients, so Feline EN S_T/Ox Gastrointestinal contains fewer protein sources to minimise the risk of food intolerance or allergies.

Benefits of feeding Feline EN S_T/Ox Gastrointestinal to your cat:

LOW RESIDUE



Low residue (high digestibility)

Easy-to-digest ingredients to help reduce gut workload and minimise non-absorbed nutrients.

LOW ANTIGEN



Limited number of protein sources

To help minimise adverse intestinal reactions.

PREBIOTIC



Added prebiotics (inulin)

To help improve intestinal health by stimulating the growth of beneficial bacteria in the gut.



PURINA®: a name you can trust.

PURINA® PRO PLAN® VETERINARY DIETS are backed by strong science, with the latest nutritional findings applied to bring you some of the most innovative and effective formulas.

With Feline EN S_T/O_x Gastrointestinal wet and dry formulas you can be confident that your cat will benefit from a diet that provides optimum nutrition whilst their gastrointestinal upset is also being treated.

If a food allergy is suspected, PURINA® PRO PLAN® VETERINARY DIETS Feline HA S_T/O_x Hypoallergenic may be recommended instead.

S_T/O_x - A reassurance for urinary health.

Up to 10% of cats admitted to veterinary hospitals show some signs of urinary conditions such as urinary stones and crystals. Feline EN S_T/O_x Gastrointestinal has been specially formulated to help reduce the risk of urinary conditions occurring - so whilst your cat's gastrointestinal condition is being treated you can be reassured that the diet is also being kind to your cat's urinary tract.

Feline EN S_T/O_x Gastrointestinal is extremely palatable to encourage your cat to eat their food. It also comes in wet and dry formulas for added choice at a time when they might have a reduced interest in food.



Feeding guidelines for Feline EN S_T/O_x Gastrointestinal.

Feeding amounts are guidelines only. Adjust to maintain ideal body weight. To support digestive function, divide daily amounts into several small meals. Feline EN S_T/O_x Gastrointestinal provides complete and balanced nutrition for both adults and kittens. For kittens from six to 12 weeks, where necessary, moisten with water until weaning is complete, and then gradually reduce the added water. Your vet can provide you with feeding guidelines for kittens. Provide fresh water at all times. Veterinary advice should always be sought before use.

FEEDING RECOMMENDATIONS:

Body weight (kg)	Daily feeding quantities (adult maintenance)			
	Dry Only (g/day)	Wet Only (can/day)	Wet + Dry Combined	
			Wet (can/day)	Dry (g/day)
2	30	1/2	1/4	15
3	45	3/4	1/2	15
4	60	1	1/2	30
5	70	1+1/3	1	20
>5	+ 15g per additional kg of BW	+ 1/2 can per day for each additional kg of body weight	1	+ 10g per additional kg of BW

In case you wish to feed more wet food than dry kibble, please bear in mind that one wet can is equivalent to 50g of Feline EN dry kibble. Half of a wet can is equivalent to 25g of Feline EN dry kibble.

PURINA®
PRO PLAN®
VETERINARY
DIETS



Your veterinary clinic details:

For more information about PURINA® PRO PLAN® Veterinary Diets,
contact your local sales representative or visit www.purina-proplan.co.uk/veterinarydiets

Ask the Experts

UK: 0800 212 161 IE: 1800 509 368 8am – 6pm, Monday to Friday
Nestlé Purina UK Commercial Operations Limited, 1 City Place, Gatwick, RH6 0PA

Please note that all indications for PURINA® PRO PLAN® Veterinary Diets mentioned in this leaflet are for the dietary support of cats with the listed conditions and do not preclude appropriate medical management. The veterinary diets should be used under veterinary supervision. ©Reg. Trademark of Société des Produits Nestlé S.A.